

## Genesys 100W gHID System Data Sheet

### Introduction

The Genesys 100W gHID lighting system is an excellent energy savings solution for indoor and outdoor HID lights from 150W to 320W. The solution consists of one high-efficiency gHID electronic ballast, one high performance 100W metal halide lamp, and hardware for installation.

The key component of the gHID system is the Genesys ballast. Its innovative, patented design and remarkable circuit efficiency extend the rated life of a standard HID lamp and provide a bright, white light. The high quality light produced by the gHID ballast allows for the use of a much lower wattage lamp, saving up to 72% in energy usage.

gHID ballasts are built to operate in temperatures ranging from -30°C to 105°C, and have an auto standby mode that conserves energy and ballast life when a lamp fails. gHID can be internally mounted in most HID fixtures, or remote mounted up to 10 feet from the fixture itself. Installation is easy due to gHID's light weight and there is no need for an external capacitor or ignitor. gHID provides a true low cost retrofit with 40% to 72% energy savings.

Other energy saving lighting products require the entire fixture to be replaced and often need additional fixtures to provide adequate light quality. The Genesys system is a one for one retrofit that saves substantial energy and minimizes material waste.

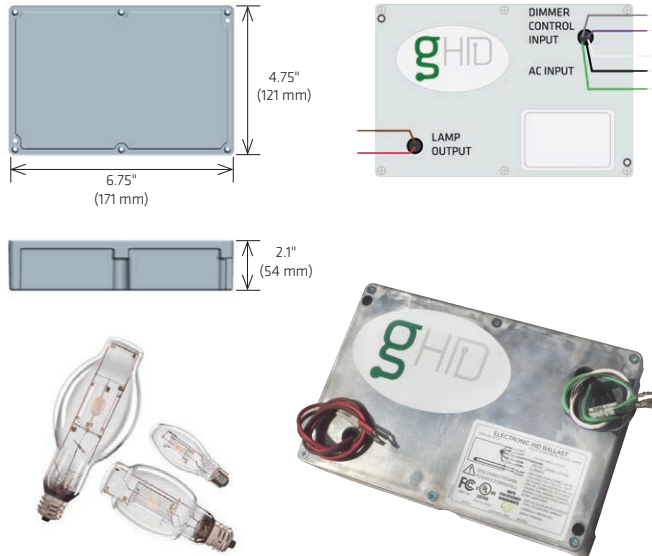


### gHID Benefits & Comparison

Feature	100W gHID	Notes
<b>Energy Savings</b>	40% - 72%	Massive savings over standard 250W magnetic HID ballast
<b>Environment (Operating Range)</b>	-30°C to 105°C	Best in class performance; suitable for the harshest environments
<b>Lamp Life</b>	Extends life	High frequency and Smart Strike technology extend life by reducing wear on lamp components (Refer to manufacturer's spec for rated life)
<b>Ballast Life</b>	Extends life	Extended life over magnetic ballast
<b>Lumen Maintenance</b>	Minimum 80% of lumens at end of life	Lamps run by gHID maintain lumen levels better than with standard ballasts
<b>Light Quality</b>	4000K - 5000K	Clean, bright, white, high quality light
<b>Ballast Efficiency</b>	96% Minimum 98% Typical	Most efficient HID ballast available
<b>Warmup Time Restrike Time</b>	1 Minute 4 Minutes	Fastest times of any HID system on the market
<b>Audible Hum</b>	None - gHID is silent	Eliminates the annoying hum and buzz of typical HID systems
<b>Dimming</b>	Yes - Up to 15%	Available: additional energy savings proportional to dim %
<b>Lamp Failure Standby</b>	Auto standby mode (no power draw)	Magnetic ballasts often draw 80% of full power even when lamp is out which can lead to ballast failure
<b>Weight</b>	4.25 lbs.	Versus ~6 lbs. for a magnetic ballast; makes installation easier and safer while consuming far less raw material

\* Any standard 100W HID lamp can be used with the gHID ballast. Some performance specs may vary.

### Dimensions & Wiring



### Ordering Information

<b>gHID-100W</b>	-	<b>208</b>	-	<b>DM</b>	-	<b>4K</b>	-	<b>HZ</b>
<b>Model</b> gHID-100W		<b>Voltage</b> 277 - 277V AC 208 - 208 - 240V AC 120 - 120V AC		<b>Dimming</b> DM - Dimmable ND - Non-Dimmable		<b>Lamp CCT</b> 4K - 4000 K 5K - 5000 K - (no lamp)		<b>Lamp Orientation</b> HZ - Horizontal BU - Base Up BD - Base Down - (no lamp)

